

**Ancient Greek artefacts- making predictions and inferences.**



I think this is a \_\_\_\_\_ . I think it was used for \_\_\_\_\_

I think this because \_\_\_\_\_

I think this is a \_\_\_\_\_ . I think it was used for \_\_\_\_\_

I think this because \_\_\_\_\_



I think this is a \_\_\_\_\_ . I think it was used for \_\_\_\_\_

I think this because \_\_\_\_\_



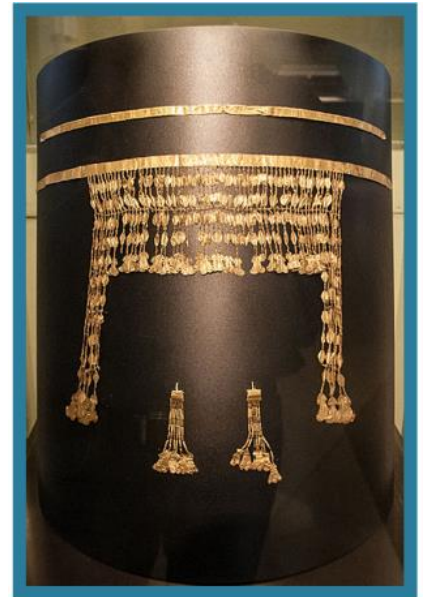
I think this is a \_\_\_\_\_ . I think it was used for \_\_\_\_\_

\_\_\_\_\_

I think this because \_\_\_\_\_

\_\_\_\_\_

\_\_\_\_\_



I think this is a \_\_\_\_\_ . I think it was used for \_\_\_\_\_

\_\_\_\_\_

I think this because \_\_\_\_\_

\_\_\_\_\_

\_\_\_\_\_

These are the questions I want to find out the answers to:

1. \_\_\_\_\_

2. \_\_\_\_\_

3. \_\_\_\_\_