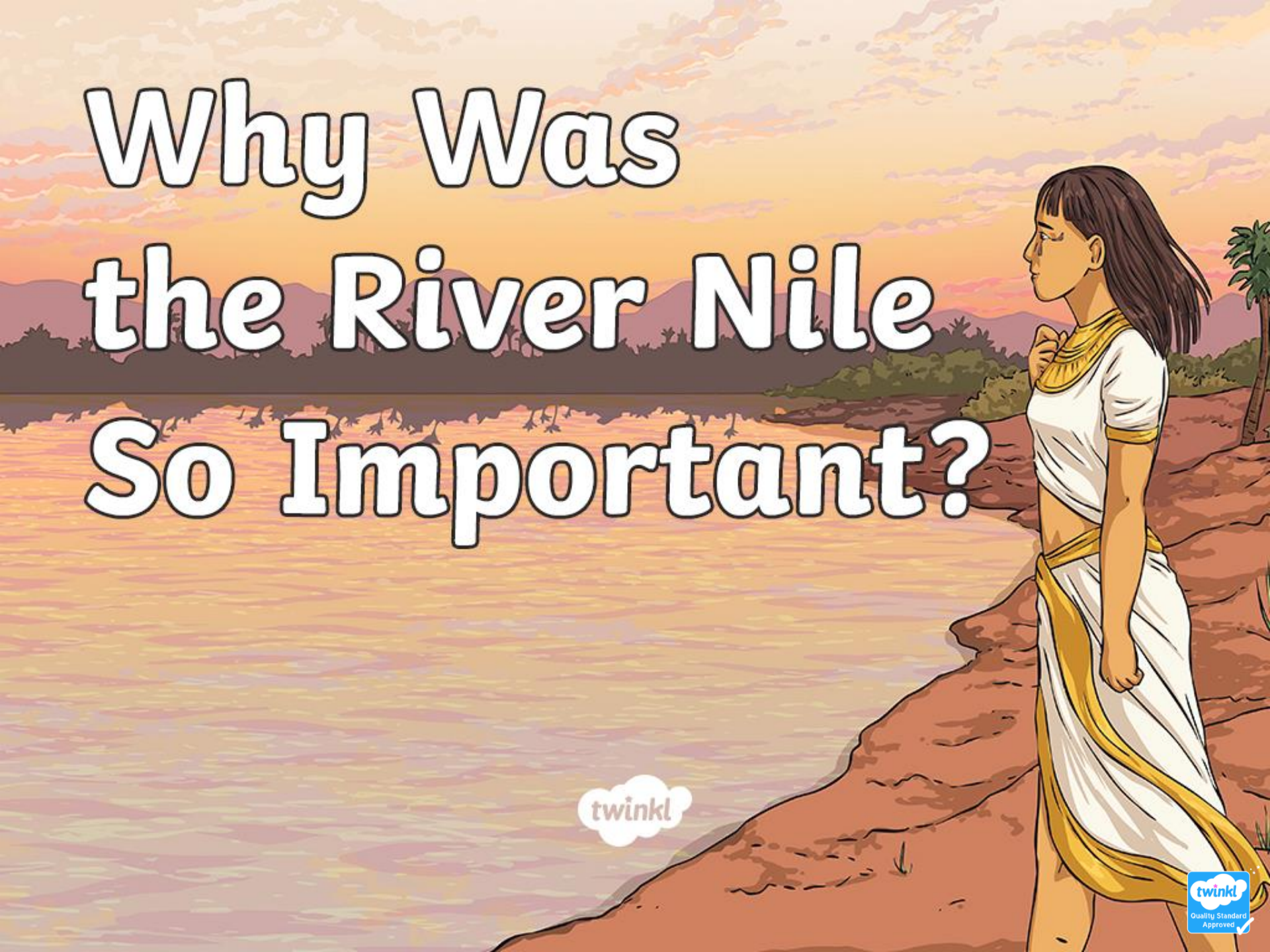
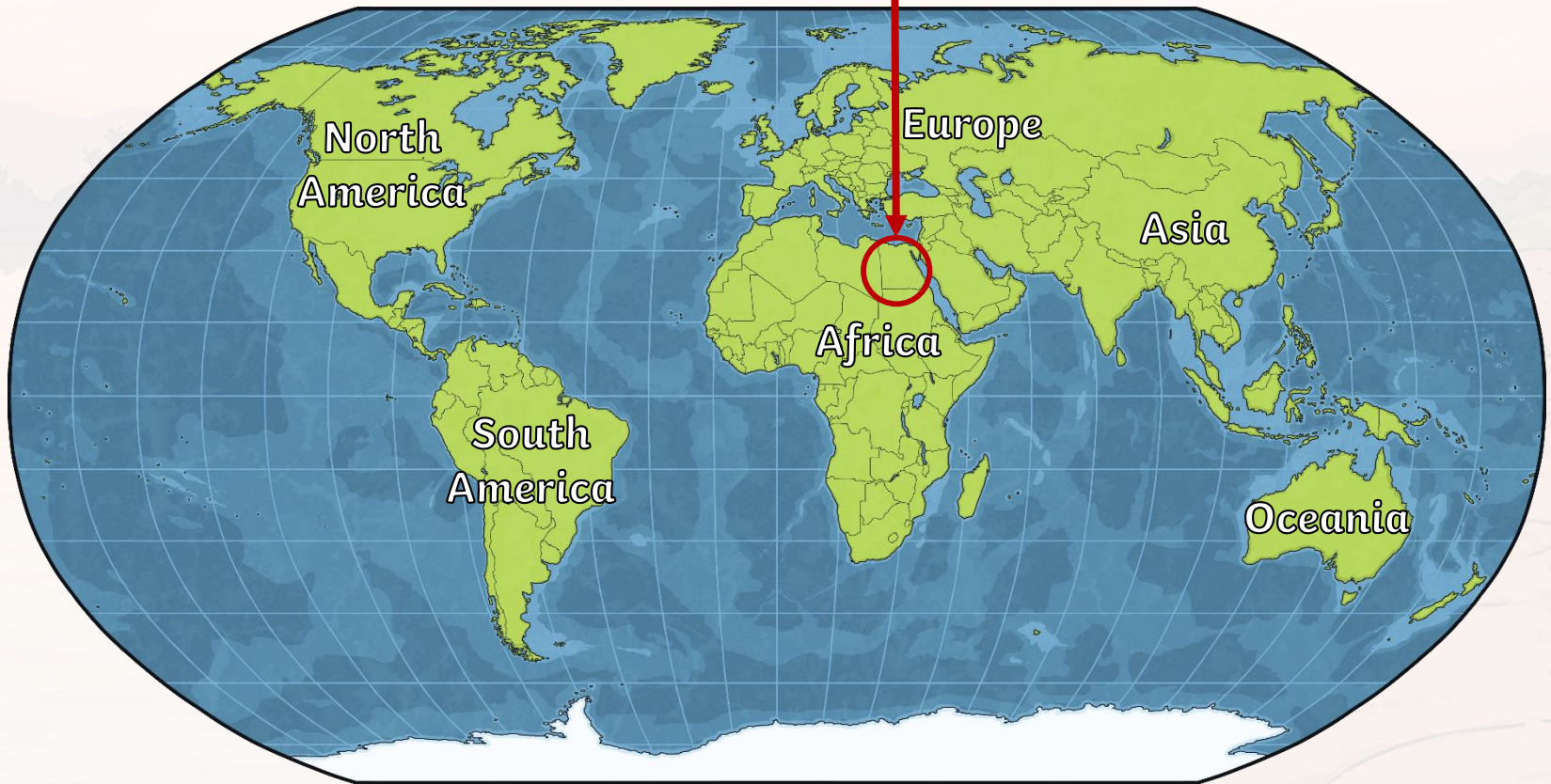


Why Was the River Nile So Important?

twinkl



Egypt is here



The River Nile



The River Nile runs through Egypt. Most people live along and around the River Nile.

This is because it is green and crops can be grown in the areas around the Nile whilst the rest of Egypt is desert.

The people of ancient Egypt depended on the Nile to survive.

Egypt

A large river called the River Nile flows through the country into the Mediterranean Sea. The Nile enters Egypt and flows north for about 1545 km (about 960 m) to the sea. The River Nile is one of the longest rivers in the world.

Where did the Ancient Egyptians live?

The Ancient Egyptians lived along the banks of the river Nile in Egypt. Farmers first settled in Egypt along the River Nile around 5000 B.C.

Where do most people in Egypt live today?

About 95 % of Egypt's population still live in the Nile valley (the area next to the river) because they still rely on it today too.

Geographical Features

Physical features

- Natural- made its self
- Can you spot any?

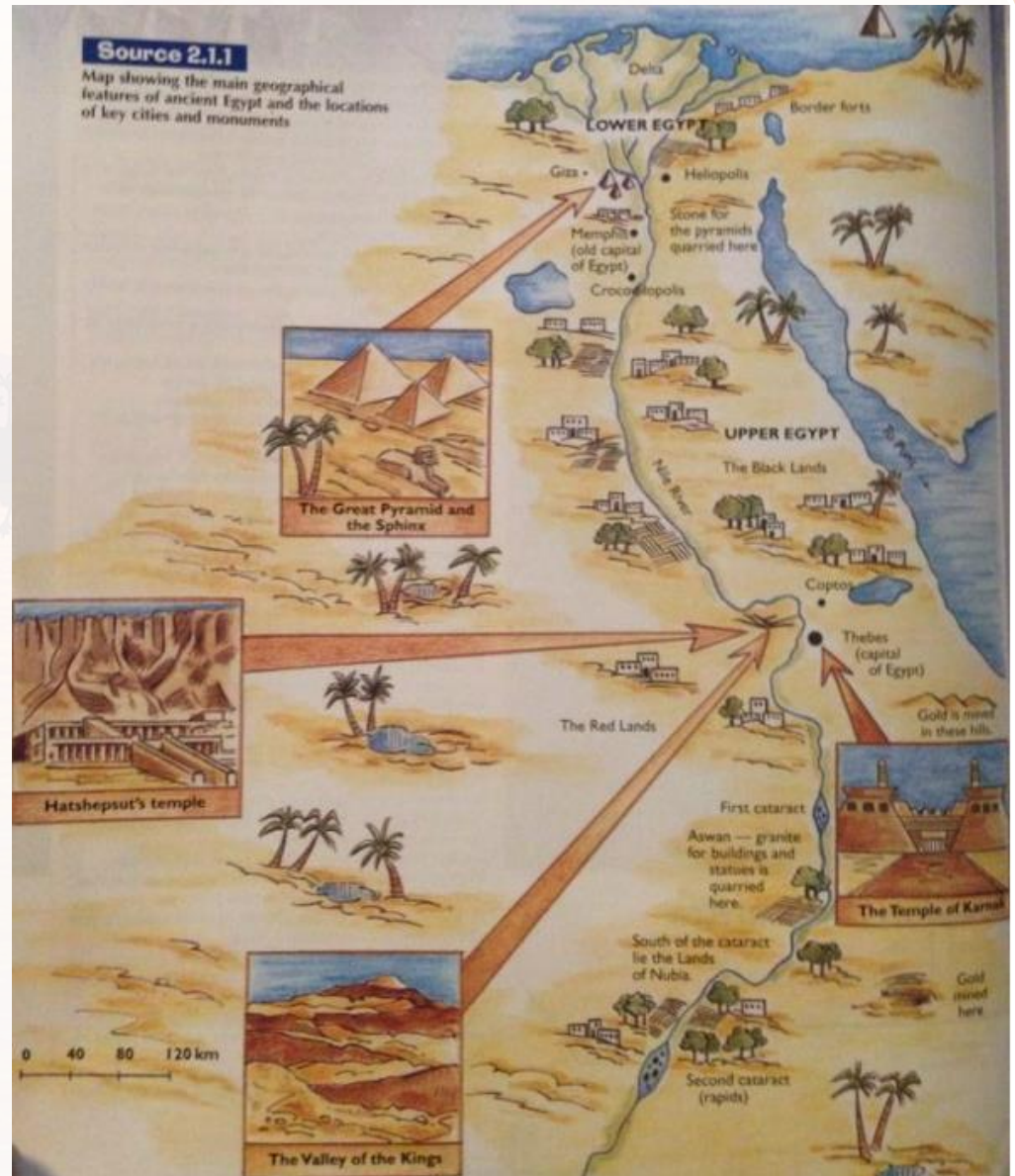
Human features

- Manmade - people made it
- Can you spot any?

Which heading would these features come under? Sort the features.

- River
- Pyramids
- Houses
- The Sphinx
- A valley
- Temples
- River mouth/ delta
- Lakes
- Seas

Can you notice any more?



Answers

Physical features

- Natural- made its self

River

Valley

River mouth/delta

Lakes

Seas

Human features

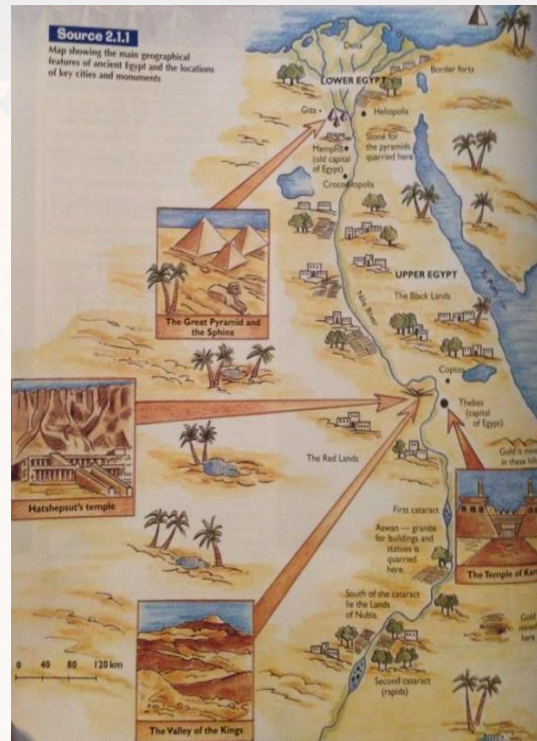
- Manmade - people made it

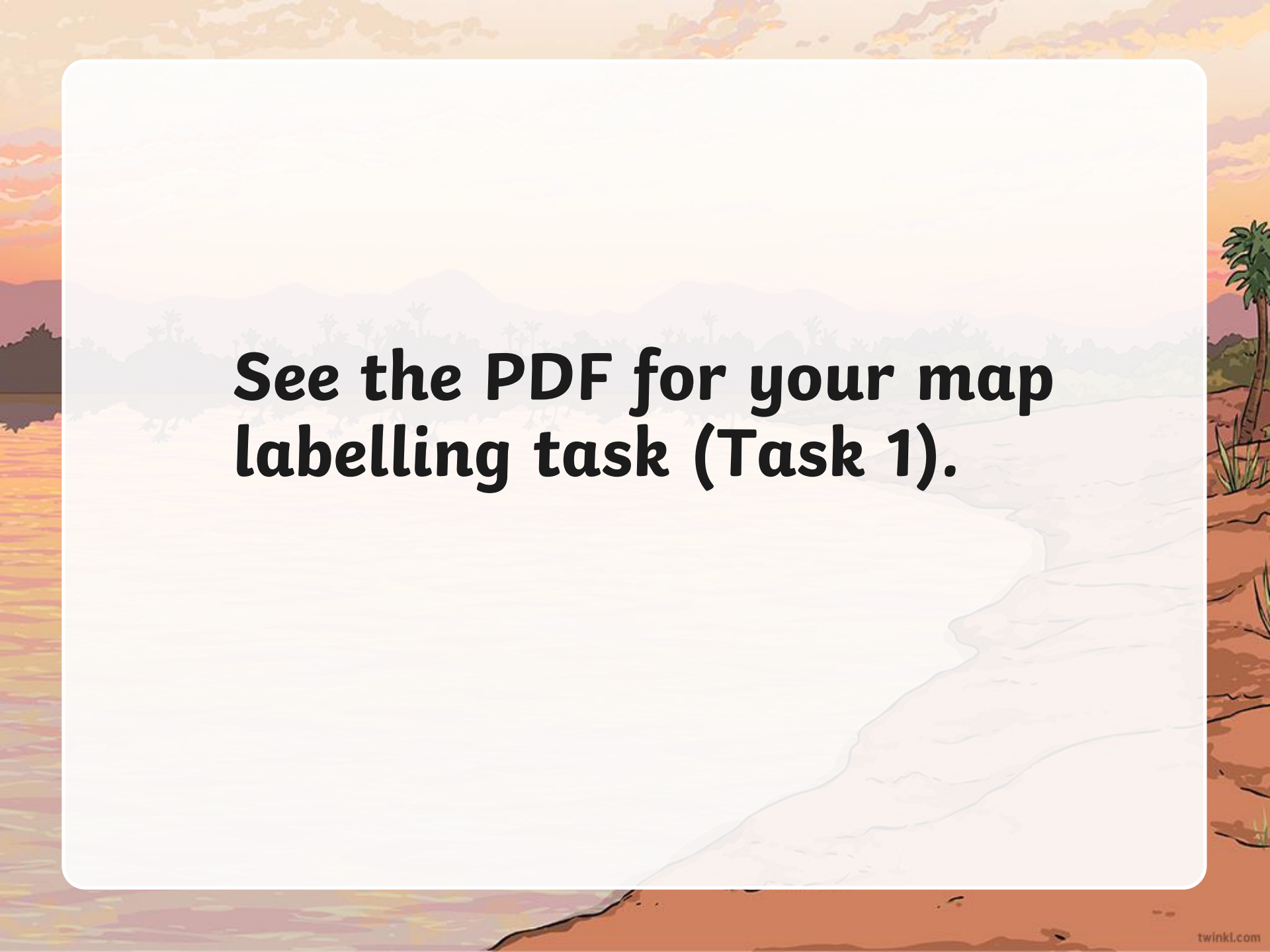
Pyramids

Houses

The Sphinx

Temples





See the PDF for your map labelling task (Task 1).

Floods

The River Nile would flood every year and leave behind a rich, black silt that fertilised the soil.

This was essential for growing food for everyone.

A system of canals that led from the Nile were also used to water fields in other areas. This is called **irrigation**.



Crops and Food

The Egyptians grew wheat and barley as well as fruits and vegetables like melons, figs, peas, garlic, lettuce and cucumbers.

Flax was grown for making linen to make clothes.

The Nile was also important for fishing. This was done in boats with nets.



Transport and Trade

There was no such thing as money in ancient Egypt so people would trade by swapping things like pottery, food, jewellery and art etc.

Boats were used to travel up and down the Nile to trade throughout the country.



Building and Papyrus



Mud from around the River Nile would be used to make bricks for building.

The papyrus plants around the river were used to make papyrus which was the paper of the ancient Egyptians.



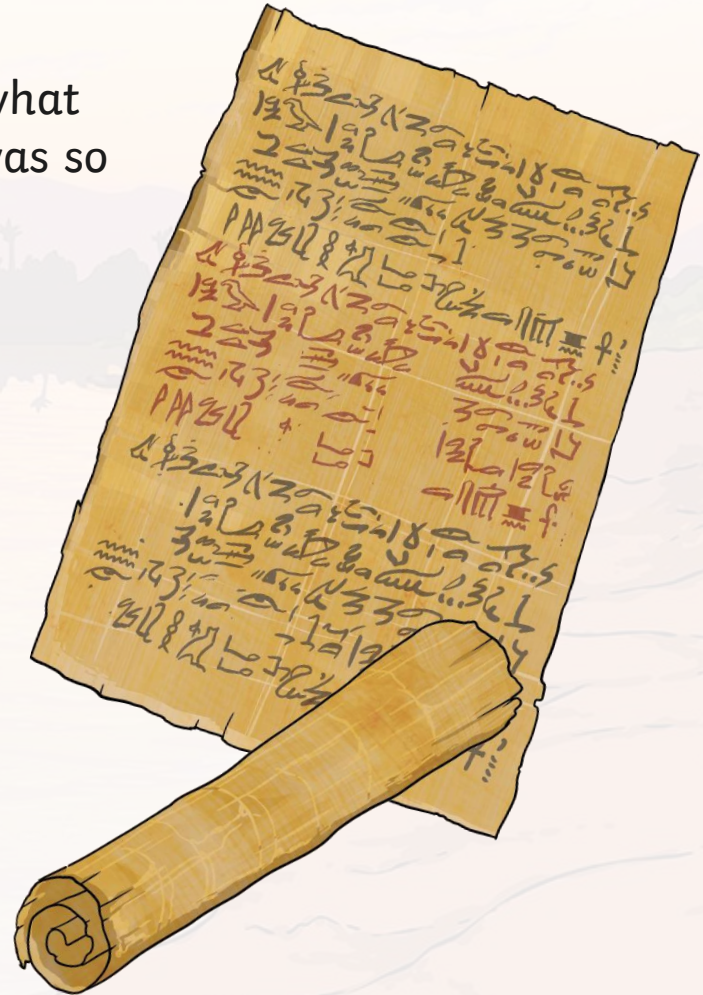
The Egyptian Calendar

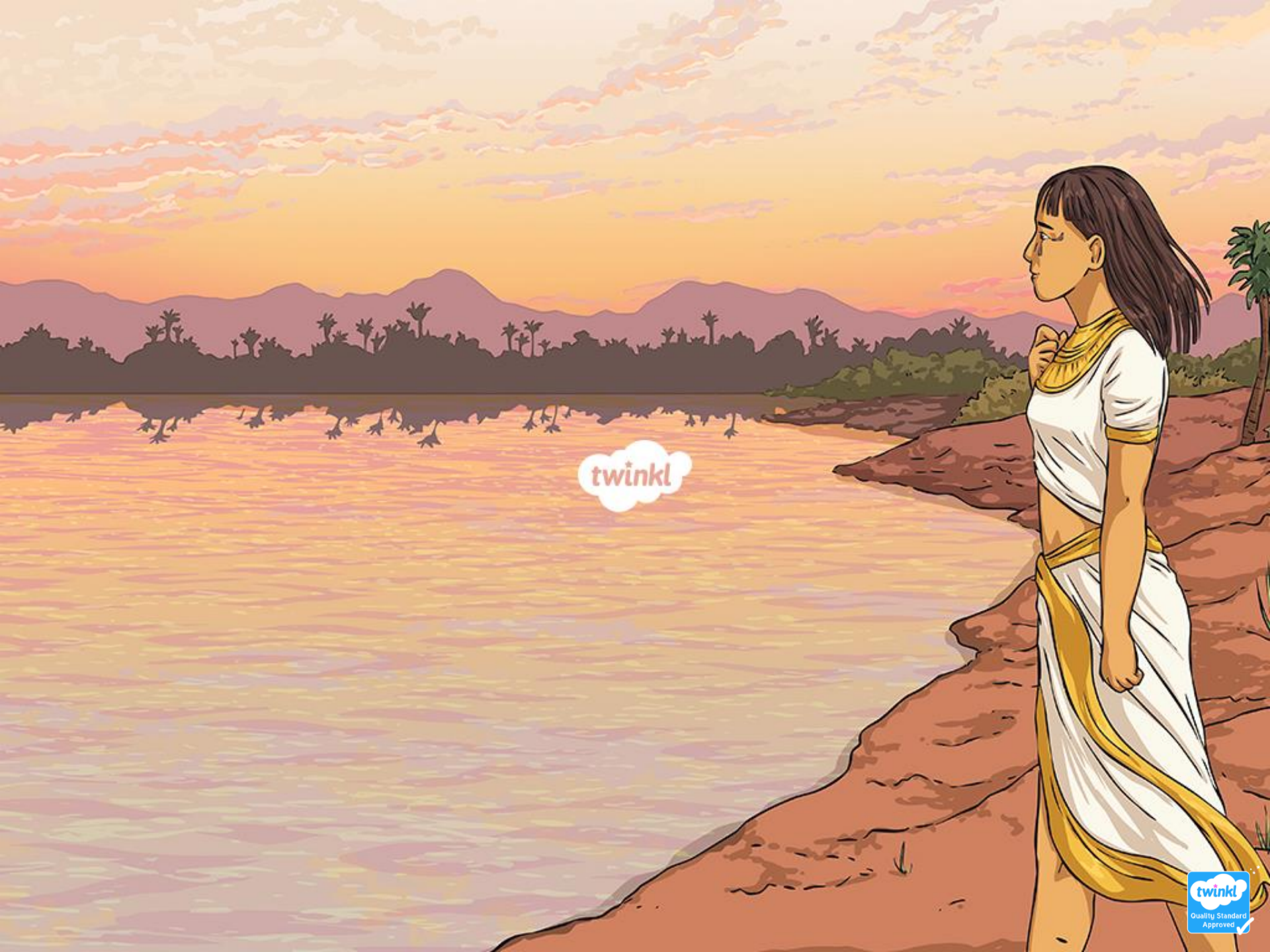
The Egyptian year was based on the happenings of the River Nile.
It had 3 seasons, each one lasting 4 months:

- **AHKET** - July – October, this was flooding season
- **PERET** – November – February, the fields were planted in this season
- **SHEMU** – March – June, the crops were harvested.

See the PDF for Task 2

Now use your worksheets to write down what you remember about why the River Nile was so important to the ancient Egyptians.





twinkl